

DekTek Tile™

Luxury Outdoor Living

218.380.9330
info@dektektile.com
dektektile.com
[Facebook.com/dektektile](https://www.facebook.com/dektektile)
[Instagram.com/dektektile](https://www.instagram.com/dektektile)

[Youtube.com/c/DekTekTiles](https://www.youtube.com/c/DekTekTiles)
[Twitter.com/DekTekTile](https://twitter.com/DekTekTile)
[Linkedin.com/company/DekTek-Tile](https://www.linkedin.com/company/DekTek-Tile)
[Pinterest.com/dektektile](https://www.pinterest.com/dektektile)
[Houzz.com/pro/tiledecks/dektek-tile](https://www.houzz.com/pro/tiledecks/dektek-tile)



DekTek Tile is the stunning & innovative concrete decking solution, completely transforming decks and outdoor living spaces across North America. The beautiful deck tiles offer features such as:

- ◆ A vibrant luxurious alternative to standard decking materials
- ◆ Ultra-Low Maintenance - spend your time enjoying your deck without the hassles of mold, rotting wood, chipping & peeling and constant upkeep of cleaning, scrubbing, & staining your deck
- ◆ No worries about fading - unlike wood & composite decking, your tiles will keep their beautiful look
- ◆ Non-Combustible - perfect for grilling, fire-pits on the deck, and states with strict fire codes
- ◆ Eco-Friendly - Best Green Building Product Finalist
- ◆ Designed to be more durable & weather resistant than standard decking materials
- ◆ DIY-Friendly - basic installation
- ◆ No substrates or heavy-duty framing needed
- ◆ Ultra Strong - weight capacity holds more than 1,000 lbs per tile- certified by professional engineers
- ◆ Standard Framing - with only minor modifications
- ◆ Makes Beautiful Accent Decks - DekTek is designed to be 1" thick, so it can be used in conjunction with wood/composite decking for classy inlays & accents



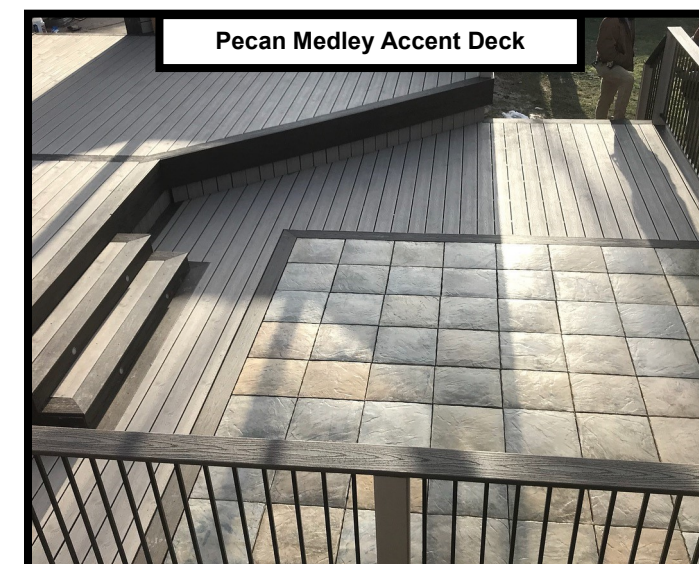
ELEVATE COLLECTION



RADIANCE COLLECTION



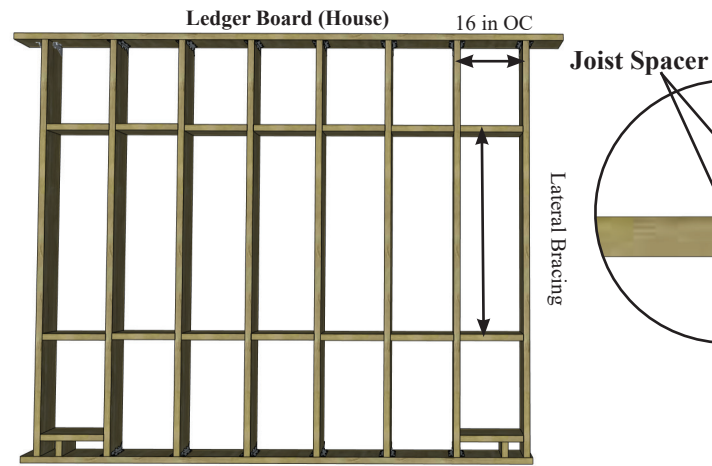
MEDITERRANEAN COLLECTION



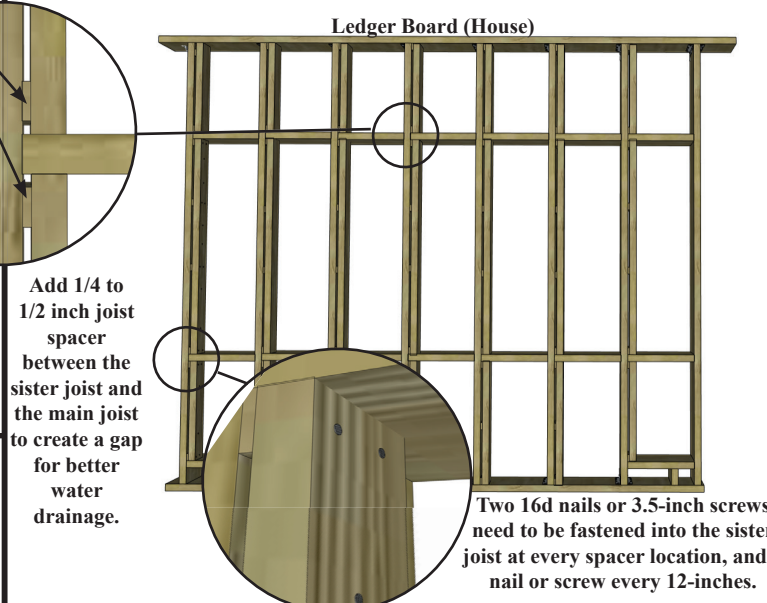
Sister Joist Installation Guide

Visit dektekile.com/installation for other installation options - roof decks, over existing concrete & more.

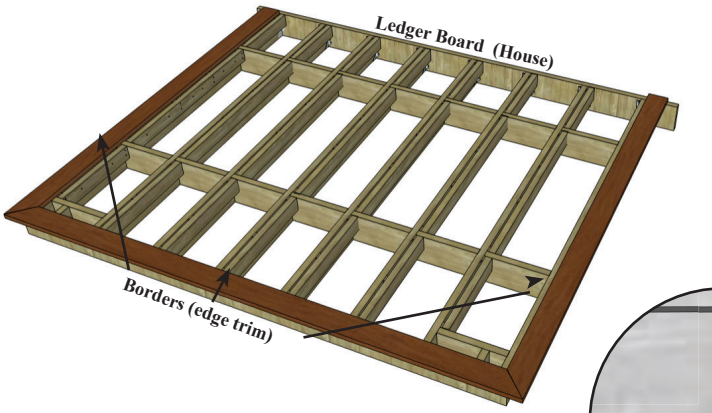
1 Frame joists 16-inches on-center (OC). Add lateral blocking, same width as existing joists, a maximum of 4-feet OC.



2 A) Add sister joist to each existing joist. If joists are capable of supporting 10.5-pounds per sq. ft. dead load, then a 2x4 sister joist is sufficient. Otherwise, a full-length joist the same size as the existing will need to be added. Either way, deck must be able to support 10.5-pounds per sq. ft. dead load.

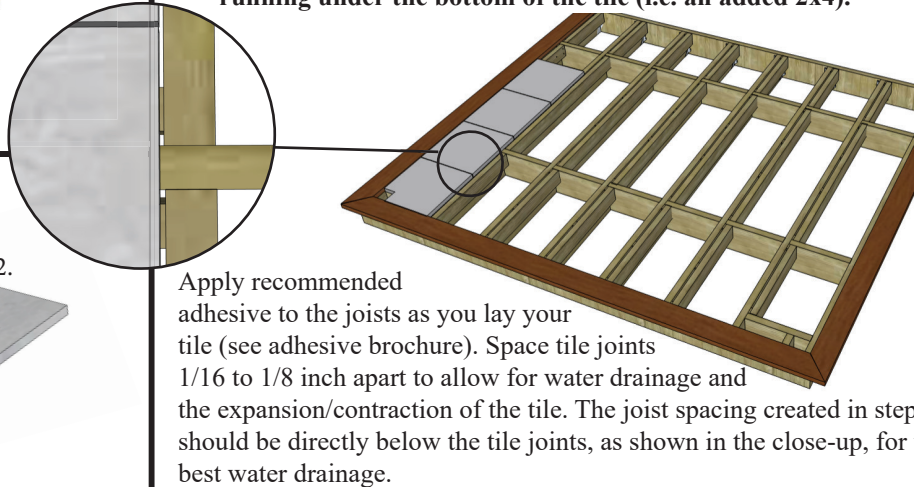


3 Install the edge trim. Borders must be mechanically fastened at the outside edges to lock in the tiles. The most common border options are wood, composite, anodized aluminum or galvanized steel. Border trim against house is optional.

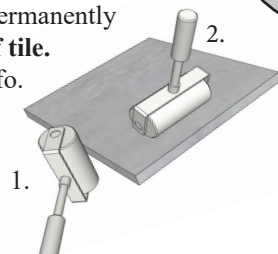


B) Place joist spacers no more than 24 inches apart. Use two 16d galvanized nails or 3.5-inch screws to fasten the sister joist to the spacer and into the existing joist. Add more 16d nails or 3.5-inch screws every 12 inches through the sister joist.

5 When you start setting the tile, be sure to choose varied colors from the order to make sure the colors are mixed nicely. **Please note: Any tile cut to 10 inches or less needs extra support running under the bottom of the tile (i.e. an added 2x4).**



4 DekTek Tile must be sealed with a high-quality solvent-based concrete sealer. First, apply on all four sides then the top of tile before permanently installing. **Do not seal bottom of tile.** See sealing brochure for more info.



We look forward to creating the ultimate outdoor living experience with you!

DekTek Tile Contact Info

Phone:
218-380-9330

Fax:
218-485-5752

Email:
info@dektekile.com

Website:
dektekile.com

3253 Laketown Road
Sturgeon Lake, MN 55783



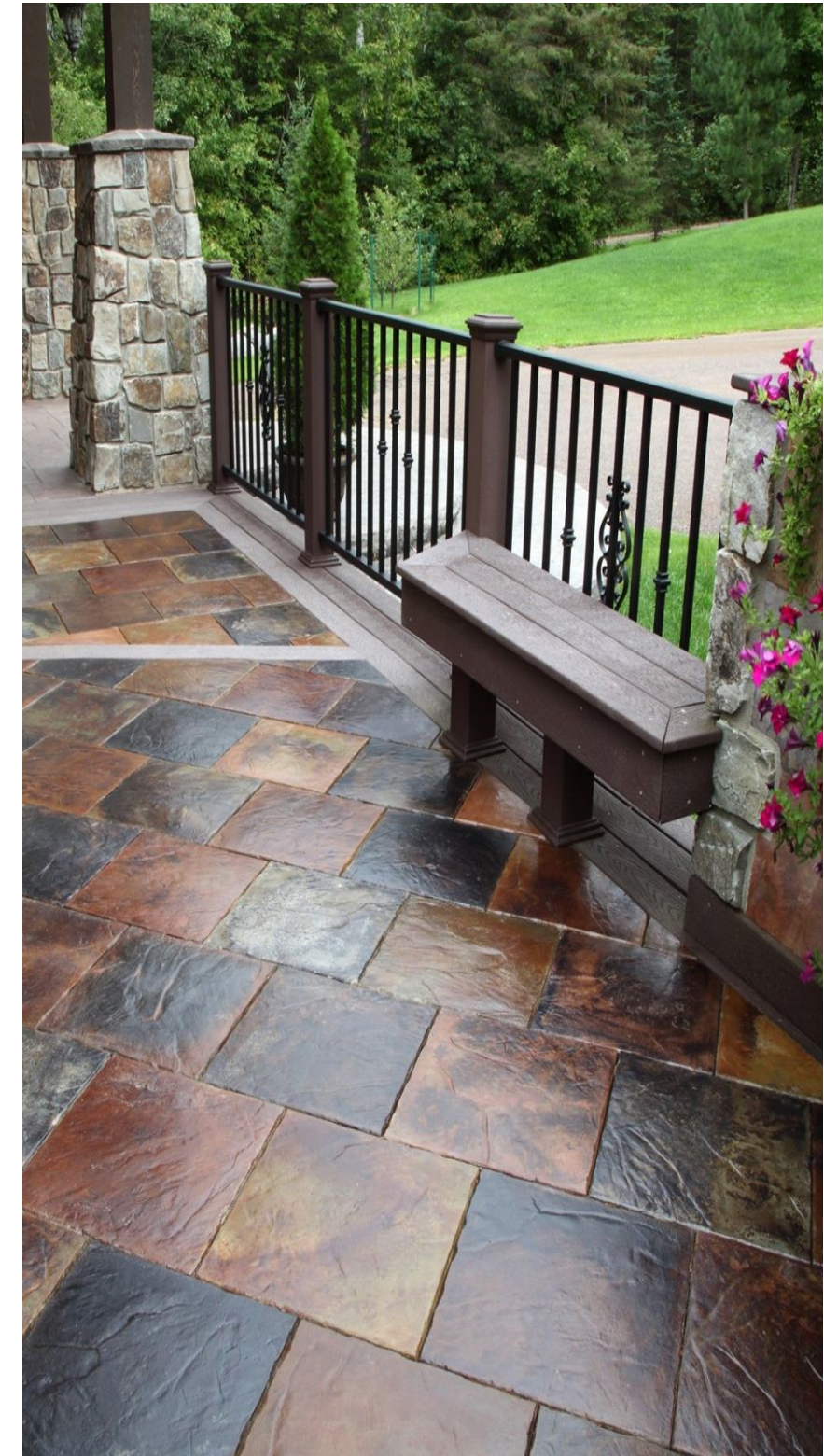
"The DekTek Tile product is simply outstanding, amazingly beautiful, and different from the wood and wood look-alike products currently flooding markets. Our new deck is commented on by every visitor to our home. My search began with looking for reduced maintenance and extended longevity compared to every decking product on the market. We were also pleasantly pleased with the ease of installation even on our very complex plans." ~Allan G., Homeowner



"We were looking for something "different" for our covered deck. We came across DekTek Tile and were amazed by the product & the pictures we saw on the website. Our decision at that point was easy! The end-result of the tiles on our deck is astonishing and we receive nothing but compliments on them. Very impressed!"

~ Mike & Kristy K., Home Owners

DekTek  **Tile**TM
The New Generation of Decking



Contractors & Building Suppliers - Become a DekTek PRO or DekTek Dealer!

Contractors visit dektekile.com/PRO. Suppliers visit dektekile.com/dealer to learn more!

©2020 DekTek Inc. All Rights Reserved